



Contract Glass and Stainless Steel Cleaner



Product Usage Guide

contract

BA800-75

Glass, Mirrors, Chrome, Stainless Steel and Ceramics

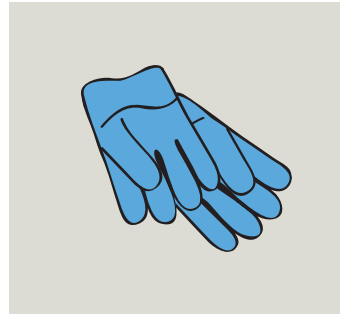


Health & Safety

Please refer to relevant COSHH Safety Data Sheet



Scan for further product details



1 Use appropriate PPE as indicated in the Safety Data Sheet.



2 Place Safety Signs.



3 Spray solution onto cloth.



4 Wipe surface to be cleaned and buff with a dry lint free cloth.



5 Remove Safety Signs.



Do not spray near food.