



# Contract Glass and Stainless Steel Cleaner



When dosing concentrate chemicals always use the recommended PPE, and always read the labels to check best practice for handling both the undiluted & ready to use solutions.

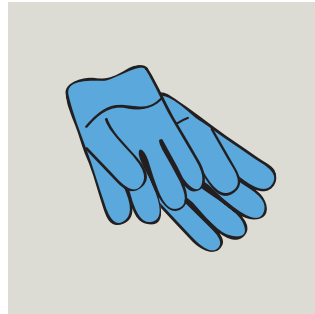
## Product Usage Guide

contract

### BA800-5



**Glass, Mirrors, Chrome, Stainless Steel and Ceramics**



**1** Use appropriate PPE as indicated in the Safety Data Sheet.



**2** Place Safety Signs.



**3** Pour solution into sprayer bottle. (undiluted).



**4** Spray solution onto cloth.



**5** Wipe surface to be cleaned and buff with a soft cloth.



**6** Remove Safety Signs.

### Health & Safety

Please refer to relevant COSHH Safety Data Sheet



Scan for further product details



Do not spray near food.